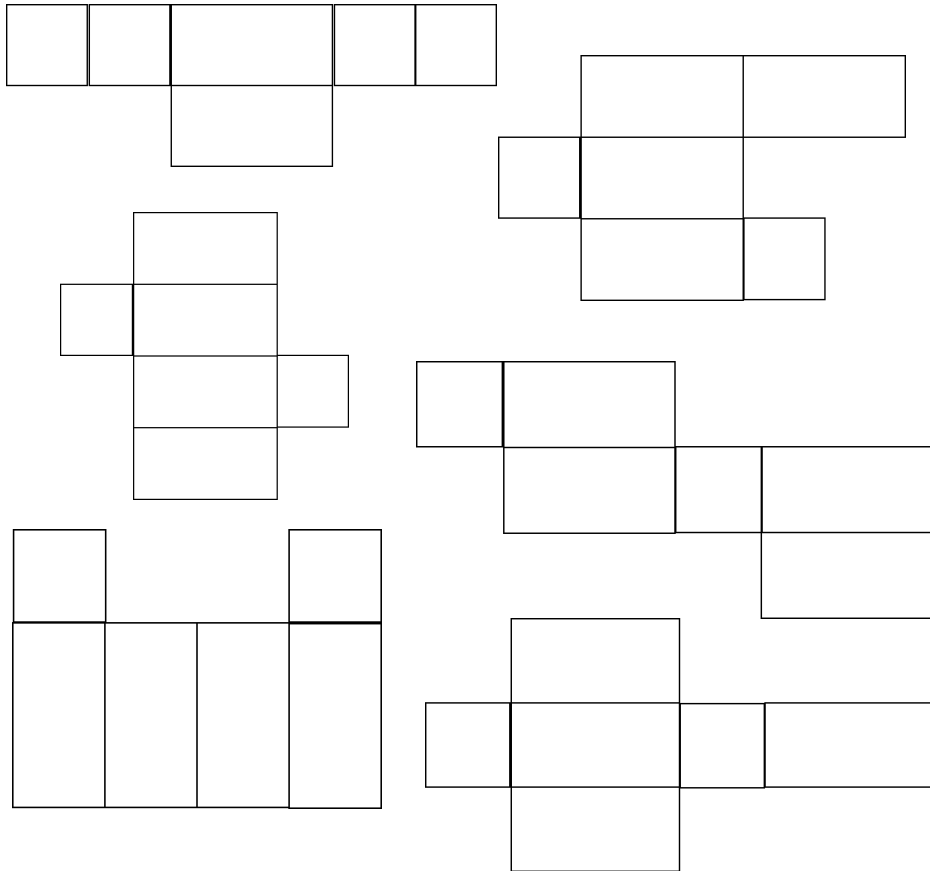


Bath Bombs & Tablets

Maths—identify 3D shapes from 2D representations

We need to make packaging for your bath bombs.

Tick ✓ or cross ✗ to show which nets will fold up to make a complete box, then write the name of the resulting 3D shape.

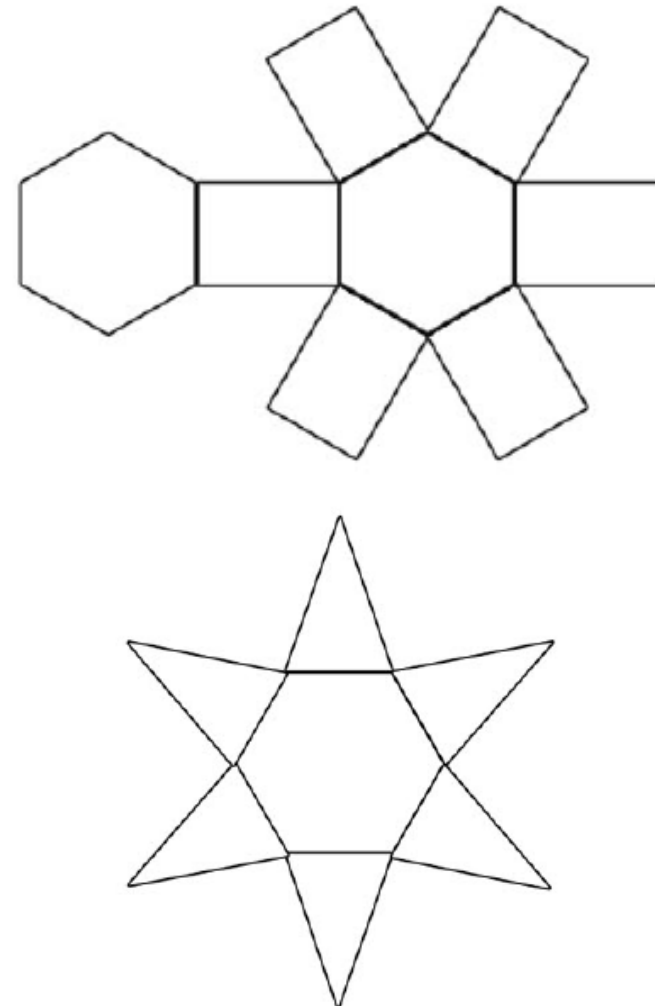


The 3D shape is a _____

Bath Bombs & Tablets

Maths - compare acute, obtuse & reflex angles

On these nets of bath bomb boxes, mark all the **acute angles in blue**, the obtuse **angles in red** and **reflex angles in green**

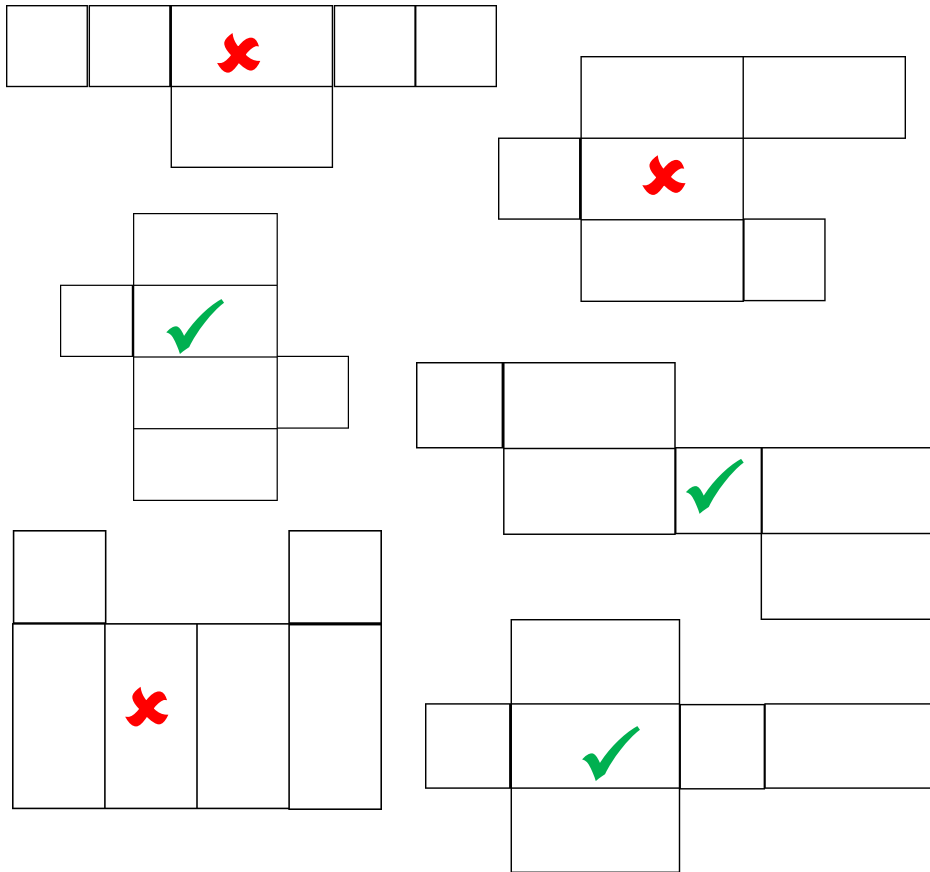


Bath Bombs & Tablets

Maths—identify 3D shapes from 2D representations

We need to make packaging for your bath bombs.

Tick ✓ or cross ✗ to show which nets will fold up to make a complete box, then write the name of the resulting 3D shape.

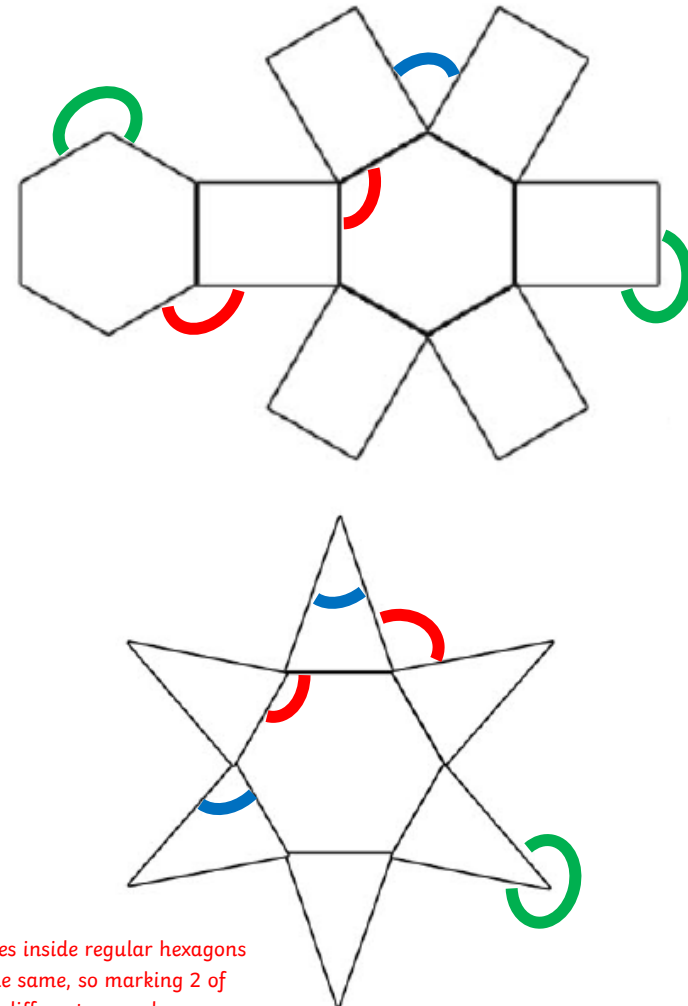


The 3D shape is a **cuboid / square prism**

Bath Bombs & Tablets

Maths - compare acute, obtuse & reflex angles

On these nets of bath bomb boxes, mark TWO DIFFERENT acute angles in blue, obtuse angles in red, reflex angles in green



NB—the angles inside regular hexagons are always the same, so marking 2 of those is not 2 different examples.