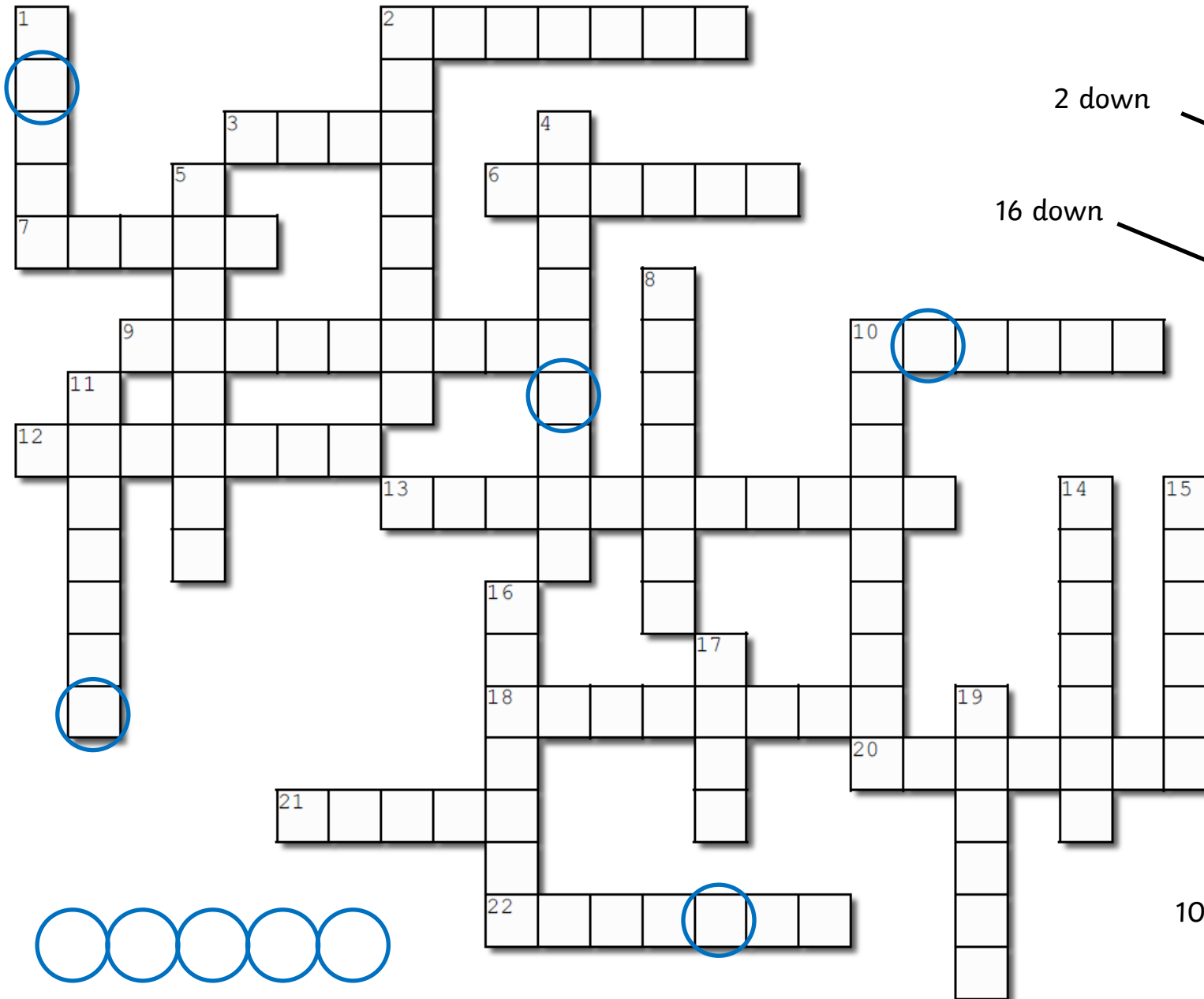


The Human Skeleton

Solve the clue sets to complete the puzzle & find the hidden word.

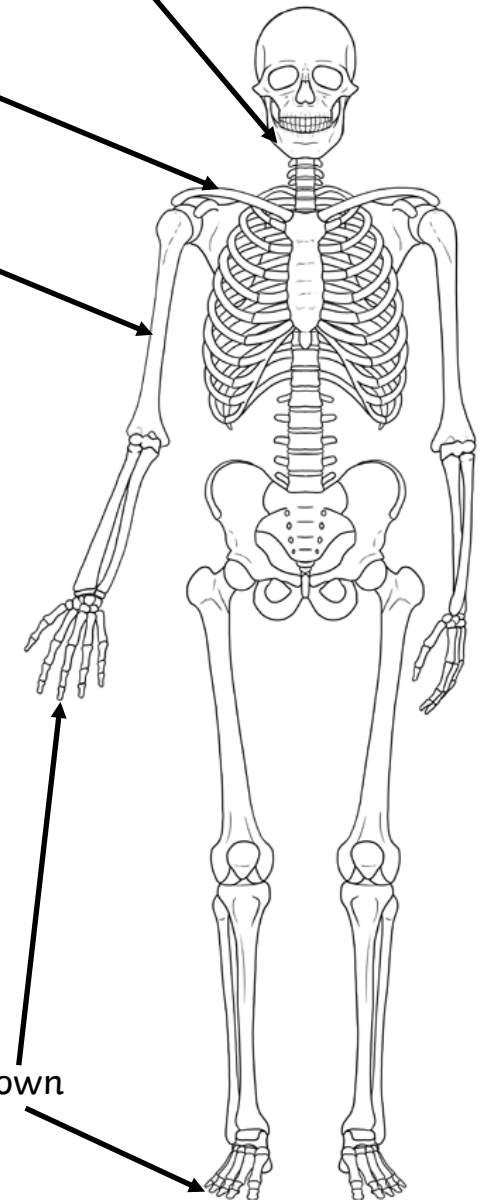
More clues on the other page!



18 across

2 down

16 down

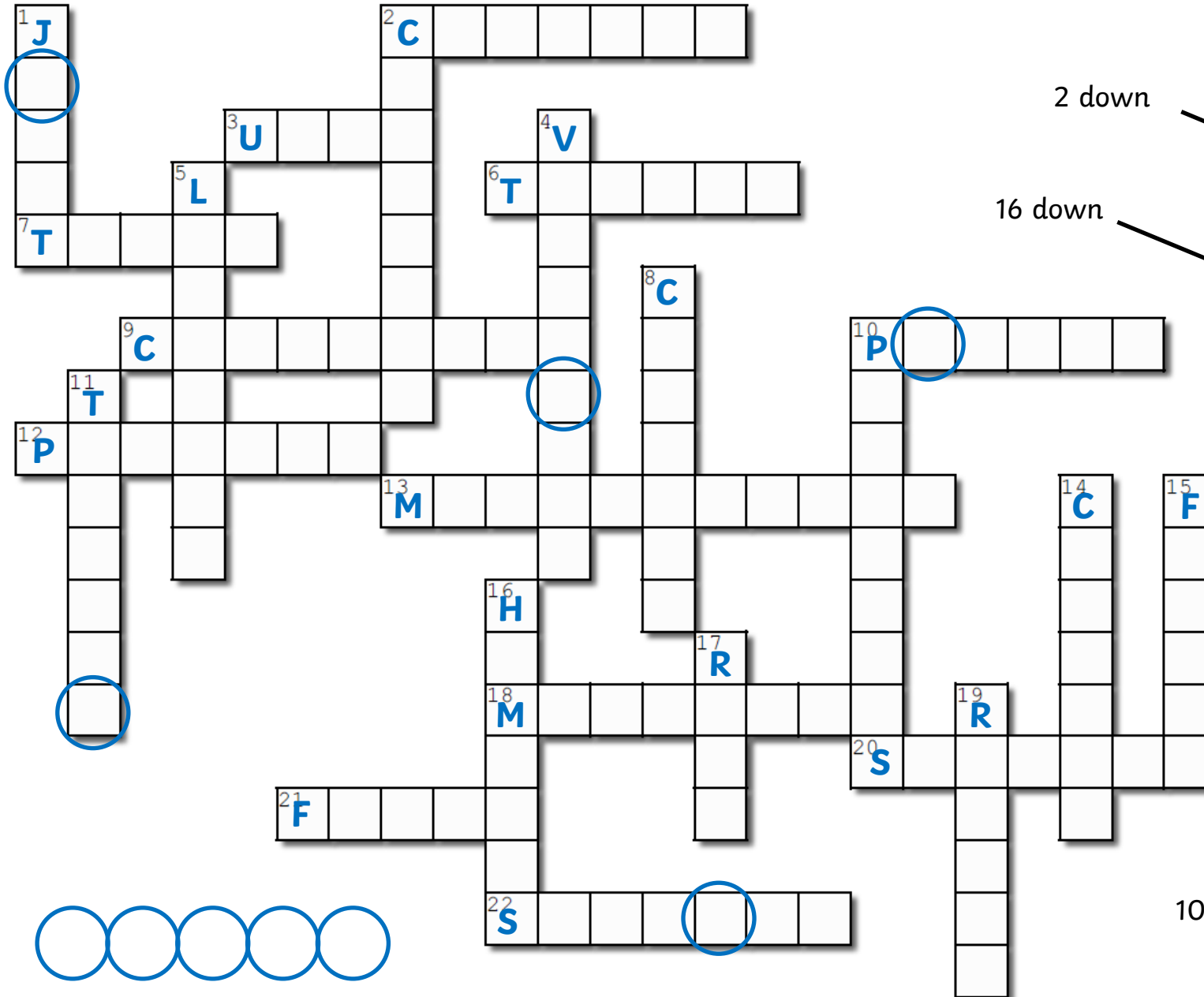


10 down

The Human Skeleton

Solve the clue sets to complete the puzzle & find the hidden word.

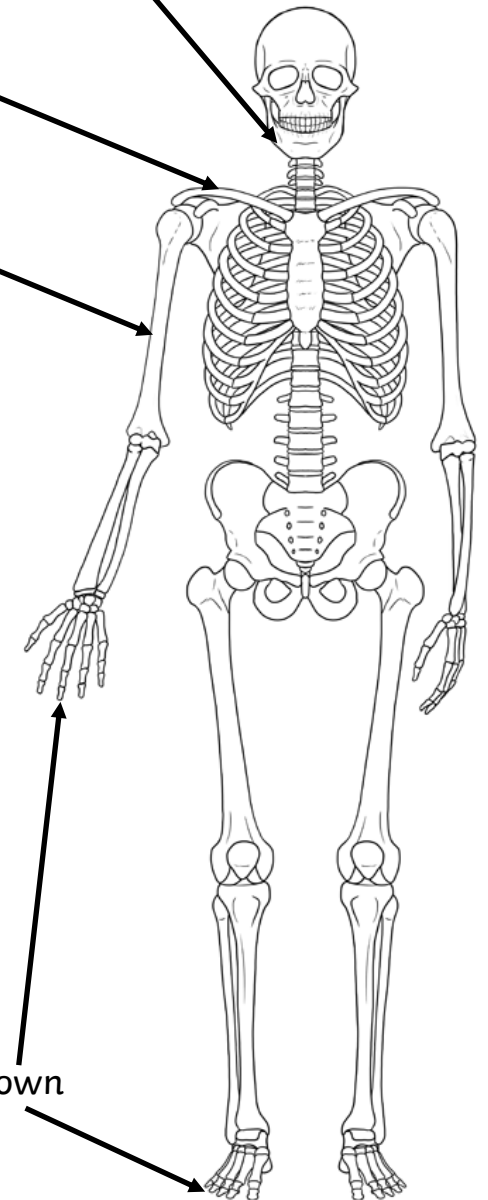
More clues on the other page!



18 across

2 down

16 down



10 down

The Human Skeleton

Solve the clue sets to complete the crossword grid on the other page.

Crack the code:

each number is a letter

A	B	C	D	E	F	G	H	I	J	K	L	M
1	2	3	4	5	6	7	8	9	10	11	12	13
N	O	P	Q	R	S	T	U	V	W	X	Y	Z
14	15	16	17	18	19	20	21	22	23	24	25	26
6 across				20 5 14 4 15 14								
9 across				3 1 18 20 9 12 1 7 5								
5 down				12 9 7 1 13 5 14 20								
14 down				3 1 12 3 9 21 13								

1 down — the gap between two bones that allows movement, such as in your knee

15 down—the thinner one of the two lower leg bones

Your ankle bones are called **11 down**. Nearby, your foot bones are called metatarsals. Similarly, the wrist bones are called **8 down** and the hand bones are metacarpals.

2 across—the tough group of bones that, all joined together, protect your brain

12 across—your kneecap

22 across—it goes down the middle of the front of your chest and holds your ribs together to protect your heart & lungs

When the rest of the answers are in place, work out where these words fit. Write your own short clue for each one.

vertebrae	
scapula	
metacarpals	
tibia	

Unscramble

3 across	N A L U
10 across	V I L S E P
21 across	R E F U M
17 down	B I R S
19 down	S I D U R A

ACROSS

2—cranium

3—ulna

6—tendon

7—tibia

9—cartilage

10—pelvis

12—patella

13—metacarpals

18—mandible

20—scapula

21—femur

22—sternum

DOWN

1—joint

2—clavicle

4—vertebrae

5—ligament

9—carpals

10—phalanges

11—tarsals

14—calcium

15—fibula

16—humerus

17—ribs

19—radius

B O N E S